

**SUPPLEMENTAL/BID BULLETIN  
ADDENDUM NO. 01: ITB 2021-DSWD-08  
December 16, 2020**

This Addendum No. 01 is issued to modify, amend and clarify items in the Bid Documents issued for the Purchase of CY 2021 Food and Non-Food Supplies for Centers. This shall form an integral part of the Bid Documents.

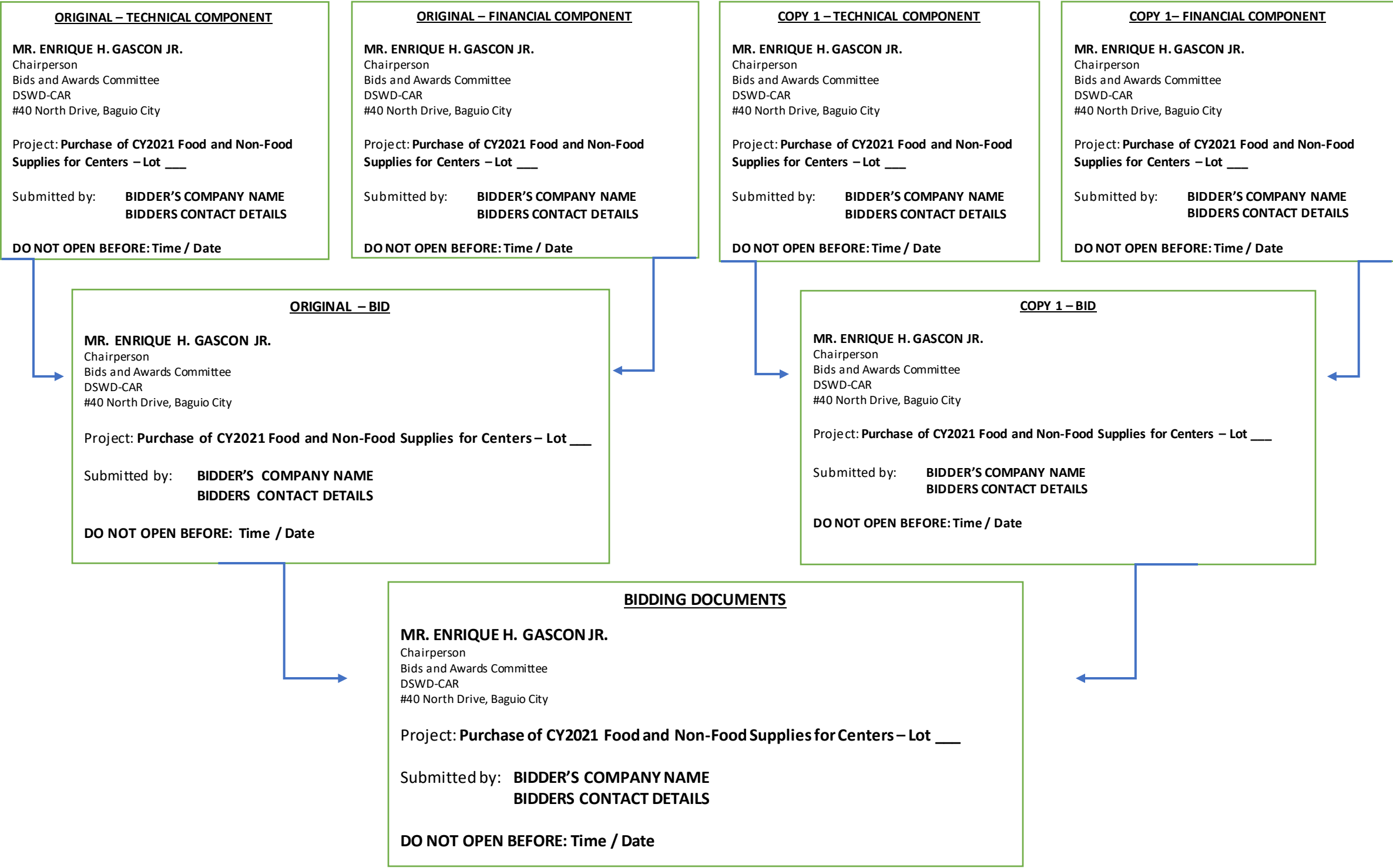
| Description/<br>Issues/<br>Concerns               | From  | To  |
|---|---|---|
| <b>Bid Validity</b>                               | Until January 31, 2020  | <b>One Hundred Twenty (120) Calendar Days</b> from the bid opening  |
| <b>Lot 1: Food and Non-Food Supplies for RSCC</b> | ABC for Lot 1:<br><br>Php 454,814.00  | ABC for Lot 1:<br><br><b>Php 396,814.00</b>   |
| <b>Total ABC for All Lots</b>                     | Two Million Forty-Nine Thousand Four Hundred Seventy-Three Pesos and 40/100 (Php2,049,473.40)   | <b>One Million Nine Hundred Ninety One Thousand Four Hundred Seventy Three Pesos and 40/100 (Php1,991,473.40)</b>   |
| <b>Bid Security</b>                               | The bid security shall be in the form of a Bid Securing Declaration, or any of the following forms and amounts:<br><br>a. The amount of not less than <b>2% of the ABC</b> of each lot, if bid security is in cash, cashier's/manager's check, bank draft/guarantee or irrevocable letter of credit;<br><b>or</b><br>b. The amount of not less than <b>5% of the ABC</b> of each lot if bid security is in Surety Bond. | The bid security shall be in the form of a Bid Securing Declaration, or any of the following forms and amounts:<br><br>a. The amount of <b>2% of the ABC of each lot</b> as indicated below if bid security is in cash, cashier's/manager's check, bank draft/guarantee or irrevocable letter of credit;<br><br><b>Lot 1: Php 7,936.80</b><br><b>Lot 2: Php20,537.86</b><br><b>Lot 3: Php11,355.33</b><br><br>b. The amount of not less than <b>5% of the ABC</b> of each lot if bid security is in Surety Bond as follows:<br><br><b>Lot 1: Php19,840.70</b><br><b>Lot 2: Php51,344.65</b><br><b>Lot 3: Php28,388.32</b> |

| Invitation to Bid and Schedule of Requirements                | Lot No.  | Description  | QTY  | Place of Delivery   |
|---|--|--|--|---|
|   | 1  | Food and Non-Food Supplies for RSCC                                      | 1 Lot  | Wangal, La Trinidad, Benguet and/or 16 Sgt. Floresca Street, Aurora Hill, Baguio City |
|   | 2  | Food and Non-Food Supplies for Regional Haven for Women and Girls (RHWG) | 1 Lot  | 40 North Drive, Baguio City   |
|   | 3  | Food and Non-Food Supplies for RRCY                                      | 1 Lot  | Sitio Payda, Barangay Bayabas, Sablan, Benguet  |
| Detailed List and Delivery Schedule of Goods for RSCC (Lot 1) | Item 7:<br>Chocolate drink, powder, 1 kg<br><br>Item no. 8:<br>Commercial Rice, 50kg/sack, well-milled |  | Item 7:<br>Chocolate drink, powder, 20g per pouch, 12pouch per pack, 42 pack per case<br><br><u>Item no. 8: For Deletion</u> |   |
| Detailed List and Delivery Schedule of Goods for RHWG (Lot 2) | Item 10:<br>Toothpaste, sachet, 190ml  |  | Item 10:<br>Toothpaste, sachet, 10g  |   |
| Detailed List and Delivery Schedule of Goods for RRCY (Lot 3) | As posted  |  | <u>Please refer to the revised delivery schedule and technical specifications of goods for RRCY</u>                          |   |
| Price Schedule for Goods Offered from Within the Philippines  | As posted  |  | <u>See attached template incorporating the list of goods per Lot</u>   |   |
| Format of Labeling of Bids/Proposals                          | <u>Please refer to the attached format and labeling</u>  |  |  |   |
| Contact Details   | <u>To include Mobile Numbers:</u><br>Globe: 0915-151-9259<br>Smart: 0963-610-9340                      |  |  |   |

For guidance and information.

**ENRIQUE H. GASCON JR.**  
BAC Chairperson/OIC-ARDA

**MARKING AND SEALING OF ENVELOPE:**



**Price Schedule for Goods Offered from Within the Philippines**

Name of Bidder : \_\_\_\_\_ Page \_\_\_ of \_\_\_  
 Invitation to Bid No. \_\_\_\_\_

| 1    | 2  | 3                 | 4            | 5                       | 6   | 7  | 8  | 9                                   | 10  |
|------|--|-------------------|--------------|-------------------------|---|--|--|-------------------------------------|---|
| Item | Description  | Country of origin | Quantity     | Unit price EXW per item | Transportation and Insurance and all other costs incidental to delivery, per item | Sales and other taxes payable if Contract is awarded, per item | Cost of Incidental Services, if applicable, per item | Total Price, per unit (col 5+6+7+8) | Total Price delivered Final Destination (col 9) x (col 4) |
|      | <b>OTHER SUPPLIES (NON-FOOD) FOR RHWG</b>  |                   |              |                         |   |  |  |                                     |   |
| 1    | Baby Oil, 50ml   |                   | 13 bottle    |                         |   |  |  |                                     |   |
| 2    | Baby Powder, 100g  |                   | 13 bottle    |                         |   |  |  |                                     | 0   |
| 3    | Baby Wipes, 90/pulls, alcohol free, unscented  |                   | 40 pack      |                         |   |  |  |                                     |   |
| 4    | Cotton buds, 200 tips per pack   |                   | 30 pack      |                         |   |  |  |                                     |   |
| 5    | Cotton, 150g per pack  |                   | 9 pack       |                         |   |  |  |                                     |   |
| 6    | Comb, 12pcs/box  |                   | 8 box        |                         |   |  |  |                                     |   |
| 7    | Chopping board, plastic, rectangular, 38.5cm X 24 cm X 2cm (L X W X H)                         |                   | 4 piece      |                         |   |  |  |                                     |   |
| 8    | Sanitary Napkin, regular, with wings, 12pcs/pack   |                   | 180 pack     |                         |   |  |  |                                     |   |
| 9    | Shampoo, sachet, at least 10ml   |                   | 150 doz      |                         |   |  |  |                                     |   |
| 10   | Toothpaste, sachet, 10g  |                   | 70 doz       |                         |   |  |  |                                     |   |
| 11   | Toothbrush, for adult 20cm, durable, medium  |                   | 150 piece    |                         |   |  |  |                                     |   |
| 12   | Panty, cotton, sizes: Small-15 pieces, Medium-25 pieces, Large-15 pieces                       |                   | 165 piece    |                         |   |  |  |                                     |   |
| 13   | Fork, non rust, stainless  |                   | 6 doz        |                         |   |  |  |                                     |   |
| 14   | Spoon, non-rust, stainless   |                   | 6 doz        |                         |   |  |  |                                     |   |
| 15   | BATHSOAP, 90 grams   |                   | 220 piece    |                         |   |  |  |                                     |   |
| 16   | DETERGENT BAR, at least 392 grams, 4 pcs per bar   |                   | 180 bar      |                         |   |  |  |                                     |   |
| 17   | Laundry Powder Detergent, 1.56kg per pack  |                   | 150 pack     |                         |   |  |  |                                     |   |
| 18   | TRASHBAG, smallsize, black, 30pcs/pack, biodegradable, polyethylene material                   |                   | 75 pack      |                         |   |  |  |                                     |   |
| 19   | TRASHBAG, largesize, black, 30pcs/pack, biodegradable, polyethylene material                   |                   | 30 pack      |                         |   |  |  |                                     |   |
| 20   | TRASHBAG, XL size, black, 30pcs/pack, biodegradable, polyethylene material                     |                   | 75 pack      |                         |   |  |  |                                     |   |
| 21   | DISHWASHING PASTE, anti-bacterial, 400 grams/jar   |                   | 135 jar      |                         |   |  |  |                                     |   |
| 22   | BLEACH, 1 gallon per container   |                   | 50 container |                         |   |  |  |                                     |   |
| 23   | Baby Shampoo, 25.4 oz, hypoallergenic  |                   | 2 bottle     |                         |   |  |  |                                     |   |
| 24   | Flat iron, heavy duty, 220v  |                   | 1 piece      |                         |   |  |  |                                     |   |
| 25   | Fabric Conditioner, 1500 mL per pack, concentrate, antibacterial                               |                   | 60 pack      |                         |   |  |  |                                     |   |
| 26   | Butcher Knife, stainless, heavy duty, blade dimension, 8 inches X 4 inches, net weight 0.74lbs |                   | 2 piece      |                         |   |  |  |                                     |   |

|    |  |     |           |   |   |   |   |   |
|----|--|-----|-----------|---|---|---|---|---|
| 27 | 6 pieces Chef Knife, set, heavy duty, composed of 9cm Paring Knife, 11.5cm vegetable knife, 15cm utility knife, 20cm Bread knife, 20cm Chefs knife, 8cm slicing knife, each with blade guard/cover | 1   | set       | - | - | - | - | - |
| 28 | Chopping board, plastic, rectangular, 38.5cm X 24 cm X 2cm (L X W X H)   | 4   | piece     | - | - | - | - | - |
| 29 | Alcohol, 70 % solution, antiseptic/disinfectant, hypoallergenic, 500 ml  | 101 | piece     | - | - | - | - | - |
| 30 | Tissue Paper, 12 rolls per pack, 2-ply, 100% recyclable  | 127 | pack      | - | - | - | - | - |
| 31 | Umbrella, folding, (2 folds), assorted colors, automatic, heavy duty, dimension: at least 35inches diameter, at least 24.75 inches (shaft length), at least 8 ribs                                 | 30  | piece     | - | - | - | - | - |
| 32 | Jogsuit for women, pair with hood, assorted color, cotton, (For January: size Medium 20pcs, Large 20pc, XL 20pcs, For July: size Medium 10 pcs, Large 10 pcs, XL 10 pcs)                           | 90  | pair      | - | - | - | - | - |
| 33 | T-shirt for ladies, plain round neck, premium cotton, size medium - 40, Large - 40, assorted color (check break down)  | 80  | piece     | - | - | - | - | - |
| 34 | Brassiere, cotton soft, push-up, size: Medium - 20 pcs, Large - 30 pcs, 2XL - 20 pcs   | 70  | piece     | - | - | - | - | - |
| 35 | Rubber shoes for women (36-42 size) size 36 - 4 pairs; size 37 - 4 pairs; size 38 - 5 pairs; size 39 - 5 pairs, size 40 - 5 pairs, size 41 - 4 pairs, size 42 - 4 pairs                            | 31  | pair      | - | - | - | - | - |
| 36 | Disinfectant Spray, 170grams, aerosol type, scented  | 30  | tin       | - | - | - | - | - |
| 37 | Jacket with hood for women, cotton, non-fluff, size medium 40 pcs, large 40 pcs, assorted color  | 80  | piece     | - | - | - | - | - |
| 38 | <b>FOOD SUPPLIES FOR RHWG</b>  | 60  | piece     | - | - | - | - | - |
| 39 | All Purpose Cream, 250ml   | 4   | sack      | - | - | - | - | - |
| 40 | Baking Powder, 250g per pack   | 60  | pack      | - | - | - | - | - |
| 41 | Bihon, 400g per pack   | 90  | pack      | - | - | - | - | - |
| 42 | Biscuits, at leas 750g, assorted   | 48  | can       | - | - | - | - | - |
| 43 | Butter Cookies, 600g per can   | 48  | can       | - | - | - | - | - |
| 44 | Black Pepper, whole, 1kg per pack  | 2   | pack      | - | - | - | - | - |
| 45 | Catsup, 1 gallon per container   | 3   | container | - | - | - | - | - |
| 46 | Chocolate drink, powder, 20g per pouch, 12pouch per pack, 42 pack per case   | 9   | case      | - | - | - | - | - |
| 47 | Cooking oil, 16kg/can  | 14  | can       | - | - | - | - | - |
| 48 | Corned beef,premium, with printed nutrition information label, 150g per tins x 48s tins/box  | 9   | box       | - | - | - | - | - |
| 49 | Condensed milk, 300ml per tins, 48 tins per box  | 9   | box       | - | - | - | - | - |
| 50 | Coffee, refill, 100g per pack, 30 packs per box  | 4   | box       | - | - | - | - | - |
| 51 | Coffee, sachet,original, 3 in 1, brown, at least 26 grams per sachet, 240 pieces per case  | 4   | case      | - | - | - | - | - |
| 52 | Creamer, refill, original, 170g/pack , 60 packs per box  | 4   | box       | - | - | - | - | - |
| 53 | Cornstarch, 1kg/pack   | 22  | pack      | - | - | - | - | - |

|    |   |  |  |  |  |    |           |  |  |  |  |  |  |  |  |  |  |  |  |  |
|----|---|--|--|--|--|----|-----------|--|--|--|--|--|--|--|--|--|--|--|--|--|
| 54 | Evaporated milk, 378ml per tins, 48 tins/box                    |  |  |  |  | 9  | box       |  |  |  |  |  |  |  |  |  |  |  |  |  |
| 55 | Fruit cocktail, at least 303g per can                           |  |  |  |  | 46 | can       |  |  |  |  |  |  |  |  |  |  |  |  |  |
| 56 | Instant noodles, 55g per pouch, 72 pouch/box, assorted flavor   |  |  |  |  | 12 | box       |  |  |  |  |  |  |  |  |  |  |  |  |  |
| 57 | Instant pancit canton, 60g/pouch, 72 pouch/box, assorted flavor |  |  |  |  | 12 | box       |  |  |  |  |  |  |  |  |  |  |  |  |  |
| 58 | Instant coconut milk, at least 40g per pack                     |  |  |  |  | 75 | piece     |  |  |  |  |  |  |  |  |  |  |  |  |  |
| 59 | Luncheon meat, 350g per tins, 24 tins per box                   |  |  |  |  | 7  | box       |  |  |  |  |  |  |  |  |  |  |  |  |  |
| 60 | Malagkit rice, white, good quality, 1kg per pack                |  |  |  |  | 32 | pack      |  |  |  |  |  |  |  |  |  |  |  |  |  |
| 61 | Macaroni elbow, 1kg/pack  |  |  |  |  | 48 | pack      |  |  |  |  |  |  |  |  |  |  |  |  |  |
| 62 | Mayonnaise, 1000ml/tub  |  |  |  |  | 15 | tub       |  |  |  |  |  |  |  |  |  |  |  |  |  |
| 63 | Meat loaf, 150g per tins, 48s tins/box                          |  |  |  |  | 9  | box       |  |  |  |  |  |  |  |  |  |  |  |  |  |
| 64 | Commercial Rice, 50kg/sack, well-milled                         |  |  |  |  | 50 | sack      |  |  |  |  |  |  |  |  |  |  |  |  |  |
| 65 | Oatmeal, at least 800g/pack, instant, quick cook                |  |  |  |  | 24 | pack      |  |  |  |  |  |  |  |  |  |  |  |  |  |
| 66 | Pancit canton, 500g/pack  |  |  |  |  | 60 | pack      |  |  |  |  |  |  |  |  |  |  |  |  |  |
| 67 | Powdered Juice, 200g/pack, assorted flavor                      |  |  |  |  | 9  | pack      |  |  |  |  |  |  |  |  |  |  |  |  |  |
| 68 | Powdered milk, fortified, 150g per pack, 72 packs per box       |  |  |  |  | 8  | box       |  |  |  |  |  |  |  |  |  |  |  |  |  |
| 69 | Salt, iodized, 1kg per pack                                     |  |  |  |  | 30 | pack      |  |  |  |  |  |  |  |  |  |  |  |  |  |
| 70 | Sinigang mix, at least 40g/pack                                 |  |  |  |  | 42 | pack      |  |  |  |  |  |  |  |  |  |  |  |  |  |
| 71 | Seasoning mix, at least 150g/pack                               |  |  |  |  | 30 | pack      |  |  |  |  |  |  |  |  |  |  |  |  |  |
| 72 | Sotanghon, 400g/pack  |  |  |  |  | 9  | pack      |  |  |  |  |  |  |  |  |  |  |  |  |  |
| 73 | Soy sauce, 1 gallon per container                               |  |  |  |  | 12 | gallon    |  |  |  |  |  |  |  |  |  |  |  |  |  |
| 74 | Spaghetti pasta, 950g/pack                                      |  |  |  |  | 42 | pack      |  |  |  |  |  |  |  |  |  |  |  |  |  |
| 75 | Spaghetti sauce, 1kg/pack                                       |  |  |  |  | 42 | pack      |  |  |  |  |  |  |  |  |  |  |  |  |  |
| 76 | Sandwich spread, at least 435g, assorted                        |  |  |  |  | 15 | bottle    |  |  |  |  |  |  |  |  |  |  |  |  |  |
| 77 | Sugar, brown, 1kg per pack                                      |  |  |  |  | 4  | pack      |  |  |  |  |  |  |  |  |  |  |  |  |  |
| 78 | Sardines, mackerel, 155g per tins, 100 tins/box                 |  |  |  |  | 4  | box       |  |  |  |  |  |  |  |  |  |  |  |  |  |
| 79 | Tomato sauce, 250mg   |  |  |  |  | 30 | pack      |  |  |  |  |  |  |  |  |  |  |  |  |  |
| 80 | Tuna flakes in oil, 175g per tins, 48 tins per box              |  |  |  |  | 4  | box       |  |  |  |  |  |  |  |  |  |  |  |  |  |
| 81 | Tuna, assorted, 175g per tins, 48 tins per box (mechado)        |  |  |  |  | 6  | box       |  |  |  |  |  |  |  |  |  |  |  |  |  |
| 82 | Vinegar, 1 gallon per container                                 |  |  |  |  | 12 | container |  |  |  |  |  |  |  |  |  |  |  |  |  |
| 83 | Whole kernel, at least 425 g per tins                           |  |  |  |  | 9  | tins      |  |  |  |  |  |  |  |  |  |  |  |  |  |
|    | Total   |  |  |  |  |    |           |  |  |  |  |  |  |  |  |  |  |  |  |  |

Name: \_\_\_\_\_

Legal Capacity: \_\_\_\_\_

Signature: \_\_\_\_\_

Duly authorized to sign the Bid for and behalf of: \_\_\_\_\_

**Price Schedule for Goods Offered from Within the Philippines**

Name of Bidder : \_\_\_\_\_  
 Invitation to Bid No. \_\_\_\_\_

Page \_\_\_ of \_\_\_

| 1  | 2   | 3 | 4         | 5 | 6 | 7 | 8 | 9 | 10 |
|----|---|---|-----------|---|---|---|---|---|----|
|    |   |   |           |   |   |   |   |   |    |
|    | <b>OTHER SUPPLIES (NON-FOOD) FOR RRCY</b>   |   |           |   |   |   |   |   |    |
| 1  | Cotton buds, 200 tips per pack  |   | 4 pack    |   |   |   |   |   |    |
| 2  | Cotton, 150g per pack   |   | 3 pack    |   |   |   |   |   | 0  |
| 3  | Umbrella, folding (2 folds) automatic heavy duty dimension: at least 35 inches diameter, at least 24.75 inches(half length) at least 8 ribs |   | 30 piece  |   |   |   |   |   |    |
| 4  | Roll-on Deodorant, 730mg, for men   |   | 60 piece  |   |   |   |   |   |    |
| 5  | Shampoo, sachet, at least 10ml  |   | 60 doz    |   |   |   |   |   |    |
| 6  | <b>Toothpaste, sachet, at least 10g</b>   |   | 100 doz   |   |   |   |   |   |    |
| 7  | Brief (XL size assorted color for boys)   |   | 100 piece |   |   |   |   |   |    |
| 8  | Brief (L size assorted color for boys)  |   | 100 piece |   |   |   |   |   |    |
| 9  | Socks, cotton, black size 8- 10   |   | 150 piece |   |   |   |   |   |    |
| 10 | Slacks pants for men size 28, plain black   |   | 15 piece  |   |   |   |   |   |    |
| 11 | Slacks pants for men size 30, plain black   |   | 15 piece  |   |   |   |   |   |    |
| 12 | Slacks pants for men size 32, plain black   |   | 15 piece  |   |   |   |   |   |    |
| 13 | Slacks pants for men size 36, plain black   |   | 10 piece  |   |   |   |   |   |    |
| 14 | Pajama cotton for men XL assorted color   |   | 30 piece  |   |   |   |   |   |    |
| 15 | Pajama cotton for men L assorted color  |   | 30 piece  |   |   |   |   |   |    |
| 16 | Face towel, cotton, 12" x 12", assorted color   |   | 60 piece  |   |   |   |   |   |    |
| 17 | <b>Polo Shirt with collar for Men, medium white</b>   |   | 10 piece  |   |   |   |   |   |    |
| 18 | <b>Polo Shirt with collar for Men, large white</b>  |   | 10 piece  |   |   |   |   |   |    |
| 19 | <b>Curtain, standard size, plain blue</b>   |   | 16 piece  |   |   |   |   |   |    |
| 20 | <b>Curtain, standard size, plain green</b>  |   | 16 piece  |   |   |   |   |   |    |
| 21 | design), brown/blue, fit to: single bed   |   | 40 sets   |   |   |   |   |   |    |
| 22 | <b>Blanket, flannel queen size, brown</b>   |   | 50 piece  |   |   |   |   |   |    |
| 23 | Chopping board, wood, rectangular 38.5cm x 24cm x 2cm (LxWxH)   |   | 6 piece   |   |   |   |   |   |    |
| 24 | Can opener, heavy duty, metal, non-rust   |   | 2 piece   |   |   |   |   |   |    |
| 25 | Jacket for men, with hood, assorted colors (medium)   |   | 30 piece  |   |   |   |   |   |    |
| 26 | Jacket for men, with hood, assorted colors (large)  |   | 20 piece  |   |   |   |   |   |    |
| 27 | BATHSOAP, 60 grams, scented   |   | 150 piece |   |   |   |   |   |    |
| 28 | Laundry Powder Detergent, 1.36 kilograms per pack   |   | 60 pack   |   |   |   |   |   |    |

|                               |  |  |  |  |  |  |  |  |  |     |         |   |   |   |   |   |   |   |   |
|-------------------------------|--|--|--|--|--|--|--|--|--|-----|---------|---|---|---|---|---|---|---|---|
| 29                            | Detergent bar, at least 392 grams, 4 pcs per bar   |  |  |  |  |  |  |  |  | 30  | bar     | - | - | - | - | - | - | - | - |
| 30                            | DISHWASHING PASTE, at least 400 grams  |  |  |  |  |  |  |  |  | 40  | pouch   | - | - | - | - | - | - | - | - |
| 31                            | Broom, Soft (Walis Tambo)  |  |  |  |  |  |  |  |  | 40  | piece   | - | - | - | - | - | - | - | - |
| 32                            | Broom Stick, Walis Tingting  |  |  |  |  |  |  |  |  | 40  | piece   | - | - | - | - | - | - | - | - |
| 33                            | Alcohol, 500 ml, 70% solution, Isopropyl   |  |  |  |  |  |  |  |  | 200 | piece   | - | - | - | - | - | - | - | - |
| 34                            | Hooded trash bin, 120 liters (2 pcs. blue, 2 pcs. green, 2 pcs. red, 2 pcs. yellow)  |  |  |  |  |  |  |  |  | 8   | pcs     | - | - | - | - | - | - | - | - |
| 35                            | Garbage bag, black, 10 pcs per pack medium size  |  |  |  |  |  |  |  |  | 30  | pack    | - | - | - | - | - | - | - | - |
| 36                            | Garbage bag, black, 10 pcs per pack large size   |  |  |  |  |  |  |  |  | 30  | pack    | - | - | - | - | - | - | - | - |
| 37                            | Tissue, 2ply, 12rolls/pack   |  |  |  |  |  |  |  |  | 76  | pack    | - | - | - | - | - | - | - | - |
| 38                            | Bleach, 1 gallon per container   |  |  |  |  |  |  |  |  | 60  | gallon  | - | - | - | - | - | - | - | - |
| 39                            | Spin Mop, large size with bucket   |  |  |  |  |  |  |  |  | 5   | pcs     | - | - | - | - | - | - | - | - |
| 40                            | Mop head refill, for Large Spin Mop  |  |  |  |  |  |  |  |  | 7   | pcs     | - | - | - | - | - | - | - | - |
| 41                            | Furniture Spray, natural, 500 ml   |  |  |  |  |  |  |  |  | 7   | pcs     | - | - | - | - | - | - | - | - |
| 42                            | Glass Cleaner, refill, 500 ml  |  |  |  |  |  |  |  |  | 14  | pcs     | - | - | - | - | - | - | - | - |
| 43                            | Glass Wiper Rubber, Size: Length 30cm, Width 11cm, Color: Blue Green   |  |  |  |  |  |  |  |  | 7   | pcs     | - | - | - | - | - | - | - | - |
| 44                            | x 6cm x 3.5cm, handle length: at least 73cm, soft brush  |  |  |  |  |  |  |  |  | 7   | pcs     | - | - | - | - | - | - | - | - |
| 45                            | Laundry gloves, XL size, 1 pair per pack, rubberized   |  |  |  |  |  |  |  |  | 8   | packs   | - | - | - | - | - | - | - | - |
| 46                            | Muriatic Acid, 500 ml per bottle   |  |  |  |  |  |  |  |  | 7   | bottles | - | - | - | - | - | - | - | - |
| 47                            | DUST PAN, non-rigid plastic w/ detachable handle, medium size  |  |  |  |  |  |  |  |  | 20  | piece   | - | - | - | - | - | - | - | - |
| 48                            | MOPHANDLE, heavy duty, aluminum, screw type  |  |  |  |  |  |  |  |  | 10  | piece   | - | - | - | - | - | - | - | - |
| 49                            | MOPHEAD, made of rayon, weight 400 grams min   |  |  |  |  |  |  |  |  | 10  | piece   | - | - | - | - | - | - | - | - |
| 50                            | TRASHBAG, plastic, transparent, 10pcs/roll, biodegradable  |  |  |  |  |  |  |  |  | 20  | roll    | - | - | - | - | - | - | - | - |
| 51                            | Basket ball, circumference: 29.5"/74.9 cm Diameter: 9.43"-9.51"/24-24.2cm pressure: 7.5-8.5 PS weight: 22 ounces(maximum) Material (indoor):Full grain leather |  |  |  |  |  |  |  |  | 6   | piece   | - | - | - | - | - | - | - | - |
| 52                            | Basket ball, circumference: 29.5"/74.9 cm Diameter: 9.43"-9.51"/24-24.2cm pressure: 7.5-8.5 PS weight: 22 ounces(maximum) Material (outdoor):Rubber            |  |  |  |  |  |  |  |  | 5   | piece   | - | - | - | - | - | - | - | - |
| 53                            | Men's body spray, 100ml per bottle   |  |  |  |  |  |  |  |  | 25  | bottles | - | - | - | - | - | - | - | - |
| 54                            | Guitar String, 1 set (number 1-6) Acoustic, 70 XL 80/20 bronze, Large light  |  |  |  |  |  |  |  |  | 15  | sets    | - | - | - | - | - | - | - | - |
| <b>FOOD SUPPLIES FOR RRCY</b> |  |  |  |  |  |  |  |  |  |     |         |   |   |   |   |   |   |   |   |
| 55                            | All Purpose Cream, 250ml   |  |  |  |  |  |  |  |  | 21  | piece   | - | - | - | - | - | - | - | - |
| 56                            | All Purpose Flour, 25kg per sack   |  |  |  |  |  |  |  |  | 2   | sack    | - | - | - | - | - | - | - | - |
| 57                            | Baking Powder, 250g per pack   |  |  |  |  |  |  |  |  | 12  | pack    | - | - | - | - | - | - | - | - |
| 58                            | Bihon, 400g per pack   |  |  |  |  |  |  |  |  | 40  | pack    | - | - | - | - | - | - | - | - |
| 59                            | Biscuits, at least 750g assorted   |  |  |  |  |  |  |  |  | 15  | can     | - | - | - | - | - | - | - | - |
| 60                            | Butter Cookies, 600g per can   |  |  |  |  |  |  |  |  | 12  | can     | - | - | - | - | - | - | - | - |



|    |   |  |  |  |  |  |  |  |  |    |               |   |   |   |   |   |   |
|----|---|--|--|--|--|--|--|--|--|----|---------------|---|---|---|---|---|---|
| 61 | Black Pepper, whole, 1kg per pack   |  |  |  |  |  |  |  |  | 5  | pack          | - | - | - | - | - | - |
| 62 | Cooking oil, 16kg/can   |  |  |  |  |  |  |  |  | 5  | can           | - | - | - | - | - | - |
| 63 | Cornd beef premium, with printed nutrition information label, 150g per tins x 48s tins/box                              |  |  |  |  |  |  |  |  | 2  | box           | - | - | - | - | - | - |
| 64 | Condensed milk, 300ml per tins, 48 tins/box   |  |  |  |  |  |  |  |  | 2  | box           | - | - | - | - | - | - |
| 65 | Coffee, refill, 100g per pack, 30packs/box  |  |  |  |  |  |  |  |  | 2  | box           | - | - | - | - | - | - |
| 66 | Coffee, sachet, original, 3 in 1, brown, at least 26 grams per sachet 240pcs/case                                       |  |  |  |  |  |  |  |  | 11 | case          | - | - | - | - | - | - |
| 67 | Creamer, refill, original, 170g/pack, 60 packs/box  |  |  |  |  |  |  |  |  | 2  | box           | - | - | - | - | - | - |
| 68 | Cornstarch, 1kg/pack  |  |  |  |  |  |  |  |  | 6  | pack          | - | - | - | - | - | - |
| 69 | Evaporated milk, 378ml per tins, 48s tins/box   |  |  |  |  |  |  |  |  | 2  | box           | - | - | - | - | - | - |
| 70 | Fruit cocktail, at least 3033g per can  |  |  |  |  |  |  |  |  | 12 | can           | - | - | - | - | - | - |
| 71 | Fish sauce, 1000 ml   |  |  |  |  |  |  |  |  | 10 | bottle        | - | - | - | - | - | - |
| 72 | Instant pancit canton, 60g/pouch, 72s pouch/box, assorted flavor  |  |  |  |  |  |  |  |  | 6  | box           | - | - | - | - | - | - |
| 73 | Luncheon meat, 350g per tins, 24 tins per box   |  |  |  |  |  |  |  |  | 5  | box           | - | - | - | - | - | - |
| 74 | Malagkit rice, white, good quality, 1kg per pack  |  |  |  |  |  |  |  |  | 20 | pack          | - | - | - | - | - | - |
| 75 | Macaroni elbow, 1kg/pack  |  |  |  |  |  |  |  |  | 15 | pack          | - | - | - | - | - | - |
| 76 | Meat loaf, 150g x 48s tins/box  |  |  |  |  |  |  |  |  | 3  | box           | - | - | - | - | - | - |
| 77 | Commercial Rice, 50kg/sack, well-milled   |  |  |  |  |  |  |  |  | 40 | sack          | - | - | - | - | - | - |
| 78 | Oatmeal, at least 800g/pack, instant, quick cook  |  |  |  |  |  |  |  |  | 20 | pack          | - | - | - | - | - | - |
| 79 | Pancit canton, 500g/pack  |  |  |  |  |  |  |  |  | 55 | pack          | - | - | - | - | - | - |
| 80 | Powdered Juice, 200g/pack, assorted flavor  |  |  |  |  |  |  |  |  | 30 | pack          | - | - | - | - | - | - |
| 81 | Powdered milk, fortified, with printed nutritional information label, 150g per pack, 72packs/box                        |  |  |  |  |  |  |  |  | 12 | box           | - | - | - | - | - | - |
| 82 | Salt, iodized, 1kg per pack   |  |  |  |  |  |  |  |  | 30 | pack          | - | - | - | - | - | - |
| 83 | Sinigang mix, at least 40g/pack   |  |  |  |  |  |  |  |  | 50 | pack          | - | - | - | - | - | - |
| 84 | Seasoning mix, at least 150g/pack   |  |  |  |  |  |  |  |  | 50 | pack          | - | - | - | - | - | - |
| 85 | Sotanghon, 400g/pack  |  |  |  |  |  |  |  |  | 20 | pack          | - | - | - | - | - | - |
| 86 | Soy sauce, 1 gallon per container   |  |  |  |  |  |  |  |  | 10 | container     | - | - | - | - | - | - |
| 87 | Spaghetti pasta, 950g/pack  |  |  |  |  |  |  |  |  | 20 | pack          | - | - | - | - | - | - |
| 88 | Spaghetti sauce, 1kg/pack   |  |  |  |  |  |  |  |  | 20 | pack          | - | - | - | - | - | - |
| 89 | Sugar, brown, 1kg per pack  |  |  |  |  |  |  |  |  | 30 | pack          | - | - | - | - | - | - |
| 90 | Sardines in tomato sauce, with printed nutritional information label, 155g per tins, 100 tins/box                       |  |  |  |  |  |  |  |  | 1  | box           | - | - | - | - | - | - |
| 91 | Tuna flakes in oil, with printed nutritional information label, 175g per tins, 48 tins per box                          |  |  |  |  |  |  |  |  | 2  | box           | - | - | - | - | - | - |
| 92 | Tuna, assorted, with printed nutritional information label, 175g per tins, 48 tins per box (flavors: afritada, menuudo) |  |  |  |  |  |  |  |  | 2  | box           | - | - | - | - | - | - |
| 93 | Vinegar, 1 gallon per container   |  |  |  |  |  |  |  |  | 10 | box container | - | - | - | - | - | - |
|    | <b>Total</b>  |  |  |  |  |  |  |  |  |    |               |   |   |   |   |   |   |

Name: \_\_\_\_\_  
Legal Capacity: \_\_\_\_\_  
Signature: \_\_\_\_\_  
Duly authorized to sign the Bid for and behalf of: \_\_\_\_\_

**Price Schedule for Goods Offered from Within the Philippines**

Name of Bidder : \_\_\_\_\_  
 Invitation to Bid No. \_\_\_\_\_

Page \_\_\_ of \_\_\_

| 1    | 2   | 3                 | 4           | 5                       | 6   | 7  | 8  | 9                                   | 10  |
|------|---|-------------------|-------------|-------------------------|---|--|--|-------------------------------------|---|
| Item | Description   | Country of origin | Quantity    | Unit price EXW per item | Transportation and insurance and all other costs incidental to delivery, per item | Sales and other taxes payable if Contract is awarded, per item | Cost of Incidental Services, if applicable, per item | Total Price, per unit (col.5+6+7+8) | Total Price delivered Final Destination (col.9) x (col.4) |
|      | <b>FOOD SUPPLIES EXPENSES FOR RSCC (Lot 1)</b>  |                   |             |                         |   |  |  |                                     |   |
| 1    | All Purpose Flour, 25kg per sack  |                   | 2 sack      |                         |   |  |  |                                     |   |
| 2    | Baking Powder, 250g per pack  |                   | 6 pack      |                         |   |  |  |                                     | 0   |
| 3    | Bihon, 400g per pack  |                   | 40 pack     |                         |   |  |  |                                     |   |
| 4    | Biscuits, at least 750g assorted  |                   | 20 can      |                         |   |  |  |                                     |   |
| 5    | Butter Cookies, at least 600g per can   |                   | 20 can      |                         |   |  |  |                                     |   |
| 6    | Caisup 1 gallon per container   |                   | 2 container |                         |   |  |  |                                     |   |
| 7    | Chocolate drink, powder, 20g per pouch, 12pouch per pack, 42 pack per case                                    |                   | 2 case      |                         |   |  |  |                                     |   |
| 8    | Cooking oil, 2L/bottle, with omega 3, liquid  |                   | 40 bottle   |                         |   |  |  |                                     |   |
| 9    | Comed beef, premium, with printed nutrition information label, 150g per tins x 48s tins/box                   |                   | 2 box       |                         |   |  |  |                                     |   |
| 10   | Condensed milk, at least 300ml per tins, 48 tins/box  |                   | 2 box       |                         |   |  |  |                                     |   |
| 11   | Evaporated milk, 378ml per tins, 48 tins/box  |                   | 2 box       |                         |   |  |  |                                     |   |
| 12   | Fruit cocktail, at least 303g per can   |                   | 12 can      |                         |   |  |  |                                     |   |
| 13   | Formula Milk, 0-6 mos., at least 1.3 kg per box   |                   | 40 box      |                         |   |  |  |                                     |   |
| 14   | Formula Milk, 12 mos-24 mos., at least 1.3 kg per box   |                   | 40 box      |                         |   |  |  |                                     |   |
| 15   | Formula Milk, 6-12 mos., at least 1.3 kg per box  |                   | 42 box      |                         |   |  |  |                                     |   |
| 16   | Luncheon meat, 350g per tins, 24 tins/box   |                   | 2 box       |                         |   |  |  |                                     |   |
| 17   | Malagkit rice, white, good quality, 1kg per pack  |                   | 12 pack     |                         |   |  |  |                                     |   |
| 18   | Macaroni elbow, 1kg/pack  |                   | 12 pack     |                         |   |  |  |                                     |   |
| 19   | Margarine classic, 2 kg per container, fortified, non-cholesterol, with printed nutritional information label |                   | 2 tub       |                         |   |  |  |                                     |   |
| 20   | Mayonnaise, 1000ml/tub  |                   | 12 tub      |                         |   |  |  |                                     |   |
| 21   | Meat loaf, at least 150g per tins, 48 tins per box  |                   | 2 box       |                         |   |  |  |                                     |   |
| 22   | Powdered milk, 1 kg per pack, 12 packs per box  |                   | 2 box       |                         |   |  |  |                                     |   |
| 23   | Salt, iodized, 1kg per pack   |                   | 4 pack      |                         |   |  |  |                                     |   |
| 24   | Sotanghon, 400g/pack  |                   | 40 pack     |                         |   |  |  |                                     |   |
| 25   | Soy sauce, 1 gallon per container   |                   | 2 container |                         |   |  |  |                                     |   |
| 26   | Spaghetti pasta, 950g/pack  |                   | 12 pack     |                         |   |  |  |                                     |   |
| 27   | Spaghetti sauce, 1kg/pack   |                   | 12 pack     |                         |   |  |  |                                     |   |
| 28   | Sandwich spread, at least 435g, assorted  |                   | 12 bottle   |                         |   |  |  |                                     |   |
| 29   | Sugar, brown, 1kg per pack  |                   | 2 pack      |                         |   |  |  |                                     |   |
| 30   | Sardines in tomato sauce, 155g per tins, 100 tins per box   |                   | 2 box       |                         |   |  |  |                                     |   |
| 31   | Tomato sauce, 250mg   |                   | 6 pack      |                         |   |  |  |                                     |   |

|    |   |   |  |  |  |  |     |           |   |   |   |   |   |   |
|----|---|---|--|--|--|--|-----|-----------|---|---|---|---|---|---|
| 32 | Tuna, assorted, 175g per tins, 48 tins per box (afritada, menuado)                                    |   |  |  |  |  |     |           |   |   |   |   |   |   |
| 33 | Vinegar, 1 gallon per container   | 2 |  |  |  |  | 2   | box       | - | - | - | - | - | - |
|    | <b>OTHER SUPPLIES AND MATERIALS FOR RSCC</b>  |   |  |  |  |  |     | container | - | - | - | - | - | - |
| 34 | Isopropyl Alcohol, 70 % solution, hypoallergenic, 500ml per bottle                                    |   |  |  |  |  | 100 | piece     | - | - | - | - | - | - |
| 35 | Cover all/Body Suit, autoclavable and washable suit; water proof fabric                               |   |  |  |  |  | 50  | set       | - | - | - | - | - | - |
| 36 | Face shield, transparent, anti-fog/anti-moist, re-usable  |   |  |  |  |  | 69  | piece     | - | - | - | - | - | - |
| 37 | Head cover, garterized, 100 pieces per box  |   |  |  |  |  | 4   | box       | - | - | - | - | - | - |
| 38 | Disposable Baby Diaper, Medium, with cottony cover, elastic waistband, side leak guards, 54 pcs./pack |   |  |  |  |  | 35  | pack      | - | - | - | - | - | - |
| 39 | Disposable Baby Diaper, Large, with cottony cover, elastic waistband, side leak guards, 54 pcs./pack  |   |  |  |  |  | 35  | pack      | - | - | - | - | - | - |
| 40 | Disposable Baby Diaper, XL, with cottony cover, elastic waistband, side leak guards, 54 pcs./pack     |   |  |  |  |  | 35  | pack      | - | - | - | - | - | - |
| 41 | Shoe cover, 100 pieces per box  |   |  |  |  |  | 6   | box       | - | - | - | - | - | - |
| 42 | Sterile gloves, medium size, 50 pairs per box   |   |  |  |  |  | 4   | box       | - | - | - | - | - | - |
| 43 | Surgical Facemask, at least two (2) ply, 50 pieces per box  |   |  |  |  |  | 13  | box       | - | - | - | - | - | - |
|    | <b>Total</b>  |   |  |  |  |  |     |           |   |   |   |   |   |   |

Name: \_\_\_\_\_

Legal Capacity: \_\_\_\_\_

Signature: \_\_\_\_\_

Duly authorized to sign the Bid for and behalf of: \_\_\_\_\_

**Detailed List and Delivery Schedule of Goods for RHWG**

| Item No. | GENERAL DESCRIPTION  | QUANTITY / | UNIT OF MEASURE | Delivery Schedule |                |              |               |                |               |
|----------|--|------------|-----------------|-------------------|----------------|--------------|---------------|----------------|---------------|
|          |  |            |                 | January 29, 2021  | March 26, 2021 | May 28, 2021 | July 30, 2021 | Sept. 30, 2021 | Nov. 26, 2021 |
| 3E+08    | <b>OTHER SUPPLIES (NON-FOOD)</b>   |            |                 |                   |                |              |               |                |               |
| 1        | Baby Oil, 50ml   | 13         | bottle          | 5                 |                |              | 8             |                |               |
| 2        | Baby Powder, 100g  | 13         | bottle          |                   | 5              |              |               | 8              |               |
| 3        | Baby Wipes, 90/pulls, alcohol free, unscented  | 40         | pack            | 10                | 5              | 5            | 5             | 5              | 10            |
| 4        | Cotton buds, 200 tips per pack   | 30         | pack            | 5                 | 5              | 5            | 5             | 5              | 5             |
| 5        | Cotton, 150g per pack  | 9          | pack            | 3                 |                | 3            |               | 3              |               |
| 6        | Comb, 12pcs/box  | 8          | box             |                   | 3              |              |               |                | 5             |
| 7        | Chopping board, plastic, rectangular, 38.5cm X 24 cm X 2cm (L X W X H)   | 4          | piece           |                   | 2              |              |               | 2              |               |
| 8        | Sanitary Napkin, regular, with wings, 12pcs/pack   | 180        | pack            | 30                | 25             | 25           | 25            | 25             | 50            |
| 9        | Shampoo, sachet, at least 10ml   | 150        | doz             | 20                | 30             | 20           | 20            | 20             | 40            |
| 10       | Toothpaste, sachet, 10g  | 70         | doz             | 10                | 10             | 10           | 10            | 10             | 20            |
| 11       | Toothbrush, for adult 20cm, durable, medium  | 150        | piece           | 25                | 25             | 25           | 25            | 25             | 25            |
| 12       | Panty, cotton, sizes: Small-15 pieces, Medium-25 pieces, Large-15 pieces   | 165        | piece           | 55                |                | 55           |               |                | 55            |
| 13       | Fork, non rust, stainless  | 6          | doz             |                   | 3              |              |               | 3              |               |
| 14       | Spoon, non-rust, stainless   | 6          | doz             |                   | 3              |              |               | 3              |               |
| 15       | BATHSOAP, 90 grams   | 220        | piece           | 50                | 30             | 30           | 30            | 30             | 50            |
| 16       | DETERGENT BAR, at least 392 grams, 4 pcs per bar   | 180        | bar             | 30                | 30             | 30           | 30            | 30             | 30            |
| 17       | Laundry Powder Detergent, 1.36kg per pack  | 150        | pack            | 25                | 25             | 25           | 25            | 25             | 25            |
| 18       | TRASHBAG, smallsize, black, 30pcs/pack, biodegradable, polyethylene material   | 75         | pack            | 15                | 10             | 15           | 10            | 10             | 15            |
| 19       | TRASHBAG, largesize, black, 30pcs/pack, biodegradable, polyethylene material   | 30         | pack            | 5                 | 5              | 5            | 5             | 5              | 5             |
| 20       | TRASHBAG, XL size, black, 30pcs/pack, biodegradable, polyethylene material   | 75         | pack            | 15                | 10             | 10           | 15            | 10             | 15            |
| 21       | DISHWASHING PASTE, anti-bacterial, 400 grams/jar   | 135        | jar             | 25                | 20             | 25           | 20            | 20             | 25            |
| 22       | BLEACH, 1 gallon per container   | 50         | container       | 8                 | 8              | 8            | 8             | 8              | 10            |
| 23       | Baby Shampoo, 25.4 oz, hypoallergenic  | 2          | bottle          |                   |                |              | 2             |                |               |
| 24       | Flat Iron, heavy duty, 220v  | 1          | piece           |                   |                | 1            |               |                |               |
| 25       | Fabric Conditioner, 1500 mL per pack, concentrate, antibacterial   | 60         | pack            | 10                | 10             | 10           | 10            | 10             | 10            |
| 26       | Butcher Knife, stainless, heavy duty, blade dimension, 8 Inches X 4 Inches, net weight 0.74lbs   | 2          | piece           |                   |                | 2            |               |                |               |
| 27       | 6 pieces Chef Knife , set, heavy duty, composed of 9cm Paring Knife, 11.5cm vegetable knife, 15cm utility knife, 20cm Bread knife, 20cm Chef's knife, 8cm slicing knife, each with blade guard/cover | 1          | set             |                   | 1              |              |               |                |               |
| 28       | Chopping board, plastic, rectangular, 38.5cm X 24 cm X 2cm (L X W X H)   | 4          | piece           |                   |                | 2            |               |                | 2             |
| 29       | Alcohol, 70 % solution, antiseptic/disinfectant, hypoallergenic, 500 ml  | 101        | piece           | 20                | 15             | 15           | 15            | 15             | 21            |
| 30       | Tissue Paper, 12 rolls per pack, 2-ply, 100% recyclable  | 127        | pack            | 20                | 20             | 22           | 20            | 20             | 25            |
| 31       | Umbrella, folding, (2 folds), assorted colors, automatic, heavy duty, dimension: at least 35inches diameter, at least 24.75 inches (shaft length), at least 8 ribs                                   | 30         | piece           | 10                |                | 10           |               | 10             |               |
| 32       | Jogsuit for women, pair with hood, assorted color, cotton, (For January: size Medium 20pcs, Large 20pc, XL 20pcs, For July: size Medium 10 pcs, Large 10 pcs, XL 10 pcs)                             | 90         | pair            | 60                |                |              | 30            |                |               |
| 33       | T-shirt for ladies, plain round neck, premium cotton, size medium - 40, Large - 40, assorted color (check break down)  | 80         | piece           | 20                |                | 30           |               | 30             |               |
| 34       | Brassiere, cotton soft, push-up, size: Medium - 20 pcs, Large - 30 pcs, 2XL - 20 pcs   | 70         | piece           |                   | 35             |              | 35            |                |               |
| 35       | Rubber shoes for women (36-42 size) size 36 - 4 pairs; size 37 - 4 pairs; size 38 - 5 pairs; size 39 - 5 pairs, size 40 - 5 pairs, size 41 - 4 pairs, size 42 - 4 pairs                              | 31         | pair            |                   | 31             |              |               |                |               |
| 36       | Disinfectant Spray, 170grams, aerosol type, scented  | 30         | tin             | 5                 | 5              | 5            | 5             | 5              | 5             |
| 37       | Jacket with hood for women, cotton, non-fluff, size medium 40 pcs, large 40 pcs, assorted color  | 80         | piece           | 40                |                |              | 40            |                |               |

|    | FOOD SUPPLIES  | 0  |           |    |    |    |    |    |    |
|----|--|----|-----------|----|----|----|----|----|----|
| 38 | All Purpose Cream, 250ml   | 60 | piece     | 10 | 10 | 10 | 10 | 10 | 10 |
| 39 | All Purpose Flour, 25kg per sack   | 4  | sack      | 1  |    | 1  |    | 1  | 1  |
| 40 | Baking Powder, 250g per pack   | 60 | pack      | 10 | 10 | 10 | 10 | 10 | 10 |
| 41 | Bihon , 400g per pack  | 90 | pack      | 15 | 15 | 15 | 15 | 15 | 15 |
| 42 | Biscuits, at leas 750g, assorted   | 48 | can       | 8  | 8  | 8  | 8  | 8  | 8  |
| 43 | Butter Cookies, 600g per can   | 48 | can       | 8  | 8  | 8  | 8  | 8  | 8  |
| 44 | Black Pepper, whole, 1kg per pack  | 2  | pack      | 1  |    |    | 1  |    |    |
| 45 | Catsup, 1 gallon per container   | 3  | container | 1  |    | 1  |    | 1  |    |
| 46 | Chocolate drink, powder, 20g per pouch, 12pouch per pack, 42 pack per case                   | 9  | case      | 2  | 1  | 2  | 1  | 1  | 2  |
| 47 | Cooking oil, 16kg/can  | 14 | can       | 3  | 2  | 2  | 2  | 2  | 3  |
| 48 | Corned beef, premium, with printed nutrition information label, 150g per tins x 48s tins/box | 9  | box       | 2  | 1  | 2  | 1  | 1  | 2  |
| 49 | Condensed milk, 300ml per tins, 48 tins per box  | 9  | box       | 2  | 1  | 2  | 1  | 1  | 2  |
| 50 | Coffee, refill, 100g per pack, 30 packs per box  | 4  | box       | 1  |    | 1  |    | 1  | 1  |
| 51 | Coffee, sachet, original, 3 in 1, brown, at least 26 grams per sachet, 240 pieces per case   | 4  | case      | 1  |    | 1  |    | 1  | 1  |
| 52 | Creamer, refill, original, 170g/pack , 60 packs per box                                      | 4  | box       | 1  |    | 1  |    | 1  | 1  |
| 53 | Cornstarch, 1kg/pack   | 22 | pack      | 5  | 3  | 3  | 3  | 3  | 5  |
| 54 | Evaporated milk, 378ml per tins, 48 tins/box   | 9  | box       | 2  | 1  | 2  | 1  | 1  | 2  |
| 55 | Fruit cocktail, at least 3033g per can   | 46 | can       | 10 | 8  | 5  | 8  | 5  | 10 |
| 56 | Instant noodles, 55g per pouch, 72 pouch/box, assorted flavor                                | 12 | box       | 2  | 2  | 2  | 2  | 2  | 2  |
| 57 | Instant pancit canton, 60g/pouch, 72 pouch/box, assorted flavor                              | 12 | box       | 2  | 2  | 2  | 2  | 2  | 2  |
| 58 | Instant coconut milk, at least 40g per pack  | 75 | piece     | 15 | 10 | 15 | 10 | 15 | 10 |
| 59 | Luncheon meat, 350g per tins, 24 tins per box  | 7  | box       | 2  |    | 2  |    | 1  | 2  |
| 60 | Malagkit rice, white, good quality, 1kg per pack   | 32 | pack      | 8  |    | 8  |    | 8  | 8  |
| 61 | Macaroni elbow, 1kg/pack   | 48 | pack      | 8  | 8  | 8  | 8  | 8  | 8  |
| 62 | Mayonnaise, 1000ml/tub   | 15 | tub       | 3  | 2  | 3  | 2  | 2  | 3  |
| 63 | Meat loaf, 150g per tins, 48s tins/box   | 9  | box       | 2  | 1  | 2  | 1  | 1  | 2  |
| 64 | Commercial Rice, 50kg/sack, well-milled  | 50 | sack      | 8  | 8  | 8  | 8  | 8  | 10 |
| 65 | Oatmeal, at least 800g/pack, instant, quick cook   | 24 | pack      | 5  | 3  | 5  | 3  | 3  | 5  |
| 66 | Pancit canton, 500g/pack   | 60 | pack      | 10 | 10 | 10 | 10 | 10 | 10 |
| 67 | Powdered Julce, 200g/pack, assorted flavor   | 9  | pack      | 3  |    | 3  |    | 3  |    |
| 68 | Powdered milk, fortified, 150g per pack, 72 packs per box                                    | 8  | box       | 2  | 1  | 1  | 1  | 1  | 2  |
| 69 | Salt, iodized, 1kg per pack  | 30 | pack      | 5  | 5  | 5  | 5  | 5  | 5  |
| 70 | Sinigang mix, at least 40g/pack  | 42 | pack      | 7  | 7  | 7  | 7  | 7  | 7  |
| 71 | Seasoning mix, at least 150g/pack  | 30 | pack      | 5  | 5  | 5  | 5  | 5  | 5  |
| 72 | Sotanghon, 400g/pack   | 9  | pack      | 3  |    | 3  |    | 3  |    |
| 73 | Soy sauce, 1 gallon per container  | 12 | gallon    | 2  | 2  | 2  | 2  | 2  | 2  |
| 74 | Spaghetti pasta, 950g/pack   | 42 | pack      | 7  | 7  | 7  | 7  | 7  | 7  |
| 75 | Spaghetti sauce, 1kg/pack  | 42 | pack      | 7  | 7  | 7  | 7  | 7  | 7  |
| 76 | Sandwich spread, at least 435g, assorted   | 15 | bottle    | 5  |    | 5  |    | 5  |    |
| 77 | Sugar, brown, 1kg per pack   | 4  | pack      | 1  |    | 1  |    | 1  | 1  |
| 78 | Sardines, mackerel , 155g per tins, 100 tins/box   | 4  | box       | 1  |    | 1  |    | 1  | 1  |
| 79 | Tomato sauce, 250mg  | 30 | pack      | 5  | 5  | 5  | 5  | 5  | 5  |
| 80 | Tuna flakes in oil, 175g per tins, 48 tins per box   | 4  | box       | 1  | 1  |    | 1  |    | 1  |
| 81 | Tuna, assorted, 175g per tins, 48 tins per box (mechado)                                     | 6  | box       | 2  |    | 1  |    | 1  | 2  |
| 82 | Vinegar, 1 gallon per container  | 12 | container | 2  | 2  | 2  | 2  | 2  | 2  |
| 83 | Whole kernel, at least 425 g per tins  | 9  | tins      | 3  |    | 3  |    | 3  |    |

**DETAILED LIST AND DELIVERY SCHEDULE OF GOODS FOR RRCY**

| CODE  | GENERAL DESCRIPTION   | QUANTITY | UNIT OF MEASURE | DELIVERY SCHEDULE |                 |  |               |               |
|-------|---|----------|-----------------|-------------------|-----------------|--|---------------|---------------|
|       |   |          |                 | Jan. 15, 2021     | April. 15, 2021 |  | July 15, 2021 | Sept. 15 2020 |
| 3E+08 | <b>OTHER SUPPLIES (NON-FOOD)</b>  |          |                 |                   |                 |  |               |               |
| 1     | Cotton buds, 200 tips per pack  | 4        | pack            | 2                 | 0               |  | 2             | 0             |
| 2     | Cotton, 150g per pack   | 3        | pack            | 2                 | 0               |  | 1             | 0             |
| 3     | Umbrella, folding (2 folds) automatic heavy duty dimension: at least 35 inches diameter, at least 24.75 inches(half length) at least 8 ribs | 30       | piece           | 8                 | 7               |  | 8             | 7             |
| 4     | Roll-on Deodorant, 730mg, for men   | 60       | piece           | 15                | 15              |  | 15            | 15            |
| 5     | Shampoo, sachet, at least 10ml  | 60       | doz             | 15                | 15              |  | 15            | 15            |
| 6     | Toothpaste, sachet, at least 10g  | 100      | doz             | 25                | 25              |  | 25            | 25            |
| 7     | Brief (XL size assorted color for boys)   | 100      | piece           | 25                | 25              |  | 25            | 25            |
| 8     | Brief (L size assorted color for boys)  | 100      | piece           | 25                | 25              |  | 25            | 25            |
| 9     | Socks, cotton, black size 8- 10   | 150      | piece           | 50                | 25              |  | 50            | 25            |
| 10    | Slacks pants for men size 28, plain black   | 15       | piece           | 8                 | 0               |  | 7             | 0             |
| 11    | Slacks pants for men size 30, plain black   | 15       | piece           | 8                 | 0               |  | 7             | 0             |
| 12    | Slacks pants for men size 32, plain black   | 15       | piece           | 8                 | 0               |  | 7             | 0             |
| 13    | Slacks pants for men size 36, plain black   | 10       | piece           | 5                 | 0               |  | 5             | 0             |
| 14    | Pajama cotton for men XL assorted color   | 30       | piece           | 15                | 0               |  | 15            | 0             |
| 15    | Pajama cotton for men L assorted color  | 30       | piece           | 15                | 0               |  | 15            | 0             |
| 16    | Face towel, cotton, 12" x 12", assorted color   | 60       | piece           | 30                | 0               |  | 30            | 0             |
| 17    | Polo Shirt with collar for Men, medium white  | 10       | piece           | 5                 | 0               |  | 5             | 0             |
| 18    | Polo Shirt with collar for Men, large white   | 10       | piece           | 5                 | 0               |  | 5             | 0             |
| 19    | Curtain, standard size, plain blue  | 16       | piece           | 10                | 0               |  | 6             | 0             |
| 20    | Curtain, standard size, plain green   | 16       | piece           | 10                | 0               |  | 6             | 0             |
| 21    | Bed sheets, bed skirt & pillowcase, (same color and design), brown/blue, fit to: single bed   | 40       | sets            | 20                | 0               |  | 20            | 0             |
| 22    | Blanket, flannel queen size, brown  | 50       | piece           | 15                | 10              |  | 15            | 10            |
| 23    | Chopping board, wood, rectangular 38.5cm x 24cm x 2cm (LxWxH)   | 6        | piece           | 3                 | 0               |  | 3             | 0             |
| 24    | Can opener, heavy duty, metal, non-rust   | 2        | piece           | 1                 | 0               |  | 1             | 0             |
| 25    | Jacket for men, with hood, assorted colors (medium)   | 30       | piece           | 20                | 0               |  | 10            | 0             |
| 26    | Jacket for men, with hood, assorted colors (large)  | 20       | piece           | 10                | 0               |  | 10            | 0             |
| 27    | BATHSOAP, 60 grams, scented   | 150      | piece           | 50                | 25              |  | 50            | 25            |
| 28    | Laundry Powder Detergent, 1.36 kilograms per pack   | 60       | pack            | 15                | 15              |  | 15            | 15            |
| 29    | Detergent bar, at least 392 grams, 4 pcs per bar  | 30       | bar             | 15                | 0               |  | 15            | 0             |
| 30    | DISHWASHING PASTE, at least 400 grams   | 40       | pouch           | 20                | 0               |  | 20            | 0             |
| 31    | Broom, Soft (Walis Tambo)   | 40       | piece           | 20                | 0               |  | 20            | 0             |
| 32    | Broom Stick, Walis Tingting   | 40       | piece           | 20                | 0               |  | 20            | 0             |
| 33    | Alcohol, 500 ml, 70% solution, Isoprophyl   | 200      | piece           | 50                | 50              |  | 50            | 50            |
| 34    | Hooded trash bin, 120 liters (2 pcs. blue, 2 pcs. green, 2 pcs. red, 2 pcs. yellow)   | 8        | pcs             | 8                 | 0               |  | 0             | 0             |
| 35    | Garbage bag, black, 10 pcs per pack medium size   | 30       | pack            | 30                | 0               |  | 0             | 0             |
| 36    | Garbage bag, black, 10 pcs per pack large size  | 30       | pack            | 30                | 0               |  | 0             | 0             |
| 37    | Tissue, 2ply, 12rolls/pack  | 76       | pack            | 20                | 20              |  | 36            | 0             |
| 38    | Bleach , 1 gallon per container   | 60       | gallon          | 15                | 15              |  | 15            | 15            |
| 39    | Spin Mop, large size with bucket  | 5        | pcs             | 5                 | 0               |  | 0             | 0             |
| 40    | Mop head refill, for Large Spin Mop   | 7        | pcs             | 7                 | 0               |  | 0             | 0             |
| 41    | Furniture Spray, natural, 500 ml  | 7        | pcs             | 7                 | 0               |  | 0             | 0             |
| 42    | Glass Cleaner, refill, 500 ml   | 14       | pcs             | 14                | 0               |  | 0             | 0             |
| 43    | Glass Wiper Rubber, Size: Size: Length 30cm, Width 11cm, Color: Blue Green  | 7        | pcs             | 7                 | 0               |  | 0             | 0             |
| 44    | Cleaning brush, long handle, brush size (LxWxH) 15cm x 6cm x 3.5cm, handle length: at least 73cm, soft brush hair                           | 7        | pcs             | 7                 | 0               |  | 0             | 0             |
| 45    | Laundy gloves, XL size, 1 pair per pack, rubberized   | 8        | packs           | 8                 | 0               |  | 0             | 0             |
| 46    | Muriatic Acid, 500 ml per bottle  | 7        | bottles         | 7                 | 0               |  | 0             | 0             |
| 47    | DUST PAN, non-rigid plastic w/ detachable handle, medium size   | 20       | piece           | 10                | 0               |  | 10            | 0             |
| 48    | MOPHANDLE, heavy duty, aluminum, screw type   | 10       | piece           | 10                | 0               |  | 0             | 0             |
| 49    | MOPHEAD, made of rayon, weight 400 grams min  | 10       | piece           | 10                | 0               |  | 0             | 0             |
| 50    | TRASHBAG, plastic, transparent, 10pcs/roll, biodegradable   | 20       | roll            | 20                | 0               |  | 0             | 0             |

|       |   |    |           |    |    |    |    |
|-------|---|----|-----------|----|----|----|----|
| 51    | Basket ball, circumference: 29.5"/74.9 cm<br>Diameter: 9.43"-9.51"/24-24.2cm pressure: 7.5-8.5 PS weight: 22 ounces(maximum) Material (Indoor):Full grain leather | 6  | piece     | 6  | 0  | 0  | 0  |
| 52    | Basket ball, circumference: 29.5"/74.9 cm<br>Diameter: 9.43"-9.51"/24-24.2cm pressure: 7.5-8.5 PS weight: 22 ounces(maximum) Material (outdoor):Rubber            | 5  | piece     | 5  | 0  | 0  | 0  |
| 53    | Men's body spray, 100ml per bottle  | 25 | bottles   | 25 | 0  | 0  | 0  |
| 54    | Guitar String, 1 set (number 1-6) Acoustic, 70 XL 80/20 bronze, Large light   | 15 | sets      | 10 | 0  | 5  | 0  |
| 3E+08 | <b>FOOD SUPPLIES</b>  |    |           |    |    |    |    |
| 55    | All Purpose Cream, 250ml  | 21 | piece     | 10 | 0  | 11 | 0  |
| 56    | All Purpose Flour, 25kg per sack  | 2  | sack      | 1  | 0  | 1  | 0  |
| 57    | Baking Powder, 250g per pack  | 12 | pack      | 6  | 0  | 6  | 0  |
| 58    | Bihon , 400g per pack   | 40 | pack      | 10 | 10 | 10 | 10 |
| 59    | Biscuits, at least 750g assorted  | 15 | can       | 7  |    | 8  | 0  |
| 60    | Butter Cookies, 600g per can  | 12 | can       | 6  |    | 6  | 0  |
| 61    | Black Pepper, whole, 1kg per pack   | 5  | pack      | 3  |    | 2  | 0  |
| 62    | Cooking oil, 16kg/can   | 5  | can       | 3  |    | 2  | 0  |
| 63    | Corned beef,premium, with printed nutrition information label, 150g per tins x 48s tins/box   | 2  | box       | 1  |    | 1  | 0  |
| 64    | Condensed milk, 300ml per tins, 48 tins/box   | 2  | box       | 2  |    | 0  | 0  |
| 65    | Coffee, refill, 100g per pack, 30packs/box  | 2  | box       | 2  |    | 0  | 0  |
| 66    | Coffee, sachet,original, 3 in 1, brown, at least 26 grams per sachet 240pcs/case  | 11 | case      | 6  |    | 5  | 0  |
| 67    | Creamer, refill, original, 170g/pack, 60 packs/box  | 2  | box       | 1  |    | 1  | 0  |
| 68    | Cornstarch, 1kg/pack  | 6  | pack      | 3  |    | 3  | 0  |
| 69    | Evaporated milk, 378ml per tins, 48s tins/box   | 2  | box       | 1  |    | 1  | 0  |
| 70    | Fruit cocktail, at least 3033g per can  | 12 | can       | 6  |    | 6  | 0  |
| 71    | Fish sauce, 1000 ml   | 10 | bottle    | 8  |    | 2  | 0  |
| 72    | Instant pancit canton, 60g/pouch, 72s pouch/box, assorted flavor  | 6  | box       | 3  |    | 3  | 0  |
| 73    | Luncheon meat, 350g per tins, 24 tins per box   | 5  | box       | 3  |    | 2  | 0  |
| 74    | Malagkit rice, white, good quality, 1kg per pack  | 20 | pack      | 10 |    | 10 | 0  |
| 75    | Macaroni elbow, 1kg/pack  | 15 | pack      | 7  |    | 8  | 0  |
| 76    | Meat loaf, 150g x 48s tins/box  | 3  | box       | 3  |    |    | 0  |
| 77    | Commercial Rice, 50kg/sack, well-milled   | 40 | sack      | 10 | 10 | 10 | 10 |
| 78    | Oatmeal, at least 800g/pack, instant, quick cook  | 20 | pack      | 10 |    | 10 | 0  |
| 79    | Pancit canton, 500g/pack  | 55 | pack      | 15 | 15 | 15 | 10 |
| 80    | Powdered Juice, 200g/pack, assorted flavor  | 30 | pack      | 15 | 0  | 15 | 0  |
| 81    | Powdered milk, fortified, with printed nutritional information label, 150g per pack, 72packs/box  | 12 | box       | 6  | 0  | 6  | 0  |
| 82    | Salt, iodized, 1kg per pack   | 30 | pack      | 15 | 0  | 15 | 0  |
| 83    | Sinigang mix, at least 40g/pack   | 50 | pack      | 25 | 0  | 25 | 0  |
| 84    | Seasoning mix, at least 150g/pack   | 50 | pack      | 25 | 0  | 25 | 0  |
| 85    | Sotanghon, 400g/pack  | 20 | pack      | 10 | 0  | 10 | 0  |
| 86    | Soy sauce, 1 gallon per container   | 10 | container | 5  | 0  | 5  | 0  |
| 87    | Spaghetti pasta, 950g/pack  | 20 | pack      | 10 | 0  | 10 | 0  |
| 88    | Spaghetti sauce, 1kg/pack   | 20 | pack      | 10 | 0  | 10 | 0  |
| 89    | Sugar, brown, 1kg per pack  | 30 | pack      | 15 | 0  | 15 | 0  |
| 90    | Sardines in tomato sauce, with printed nutritional information label, 155g per tins, 100 tins/box   | 1  | box       |    | 0  | 1  | 0  |
| 91    | Tuna flakes in oil, with printed nutritional information label, 175g per tins, 48 tins per box  | 2  | box       | 1  | 0  | 1  | 0  |
| 92    | Tuna, assorted, with printed nutritional information label, 175g per tins, 48 tins per box (flavors: afritada, menudo)  | 2  | box       | 1  | 0  | 1  | 0  |
| 93    | Vinegar, 1 gallon per container   | 10 | container | 5  | 0  | 5  | 0  |

**DETAILED LIST AND DELIVERY SCHEDULE OF FOOD SUPPLIES FOR RSCC**

**END-USER/UNIT : RECEPTION AND STUDY CENTER FOR CHILDREN**

| Item No.          | GENERAL DESCRIPTION   | QUANTITY/<br>SIZE | UNIT OF MEASURE | Delivery Schedule |             |              |              |              |
|-------------------|---|-------------------|-----------------|-------------------|-------------|--------------|--------------|--------------|
|                   |   |                   |                 | March 8, 2021     | May 3, 2021 | July 5, 2021 | Sept 6, 2021 | Nov. 8, 2021 |
| <b>5020305000</b> | <b>FOOD SUPPLIES EXPENSES</b>   |                   |                 |                   |             |              |              |              |
| 1                 | All Purpose Flour, 25kg per sack  | 2                 | sack            |                   | 1           |              | 1            |              |
| 2                 | Baking Powder, 250g per pack  | 6                 | pack            |                   | 3           |              | 3            |              |
| 3                 | Bihon , 400g per pack   | 40                | pack            |                   | 10          | 10           | 10           | 10           |
| 4                 | Biscuits, at least 750g assorted  | 20                | can             |                   | 10          |              | 10           |              |
| 5                 | Butter Cookies, at least 600g per can   | 20                | can             |                   | 5           | 5            | 5            | 5            |
| 6                 | Catsup 1 gallon per container   | 2                 | container       |                   | 1           |              | 1            |              |
| 7                 | Chocolate drink, powder, 20g per pouch, 12pouch per pack, 42 pack per case                                    | 2                 | case            |                   | 1           |              | 1            |              |
| 8                 | Commercial Rice, 50kg/sack, well-milled   | 20                | sack            |                   | 5           | 5            | 5            | 5            |
| 9                 | Cooking oil, 2L/bottle, with omega 3, liquid  | 40                | bottle          |                   | 10          | 10           | 10           | 10           |
| 10                | Corned beef, premium, with printed nutrition information label, 150g per tins x 48s tins/box                  | 2                 | box             |                   | 1           |              | 1            |              |
| 11                | Condensed milk, at least 300ml per tins, 48 tins/box  | 2                 | box             |                   | 1           |              | 1            |              |
| 12                | Evaporated milk, 378ml per tins, 48 tins/box  | 2                 | box             |                   | 1           |              | 1            |              |
| 13                | Fruit cocktail, at least 3033g per can  | 12                | can             |                   | 3           | 3            | 3            | 3            |
| 14                | Formula Milk, 0-6 mos., at least 1.3 kg per box   | 40                | box             |                   | 10          | 10           | 10           | 10           |
| 15                | Formula Milk, 12 mos-24 mos., at least 1.3 kg per box   | 40                | box             |                   | 10          | 10           | 10           | 10           |
| 16                | Formula Milk, 6-12 mos , at least 1.3 kg per box  | 42                | box             |                   | 12          | 10           | 10           | 10           |
| 17                | Luncheon meat, 350g per tins, 24 tins/box   | 2                 | box             |                   | 1           |              | 1            |              |
| 18                | Malagkit rice, white, good quality, 1kg per pack  | 12                | pack            |                   | 3           | 3            | 3            | 3            |
| 19                | Macaroni elbow, 1kg/pack  | 12                | pack            |                   | 3           | 3            | 3            | 3            |
| 20                | Margarine classic, 2 kg per container, fortified, non-cholesterol, with printed nutritional information label | 2                 | tub             |                   | 1           |              | 1            |              |
| 21                | Mayonnaise, 1000ml/tub  | 12                | tub             |                   | 3           | 3            | 3            | 3            |
| 22                | Meat loaf, at least 150g per tins, 48 tins per box  | 2                 | box             |                   | 1           |              | 1            |              |
| 23                | Powdered milk, 1 kg per pack, 12 packs per box  | 2                 | box             |                   | 1           |              | 1            |              |
| 24                | Salt, iodized, 1kg per pack   | 4                 | pack            |                   |             | 1            |              | 3            |
| 25                | Sotanghon, 400g/pack  | 40                | pack            |                   | 10          | 10           | 10           | 10           |
| 26                | Soy sauce, 1 gallon per container   | 2                 | container       |                   | 1           |              | 1            |              |
| 27                | Spaghetti pasta, 950g/pack  | 12                | pack            |                   | 3           | 3            | 3            | 3            |
| 28                | Spaghetti sauce, 1kg/pack   | 12                | pack            |                   | 3           | 3            | 3            | 3            |
| 29                | Sandwich spread, at least 435g, assorted  | 12                | bottle          |                   | 3           | 3            | 3            | 3            |
| 30                | Sugar, brown, 1kg per pack  | 2                 | pack            |                   | 1           |              | 1            |              |
| 31                | Sardines in tomato sauce, 155g per tins, 100 tins per box   | 2                 | box             |                   | 1           |              | 1            |              |
| 32                | Tomato sauce, 250mg   | 6                 | pack            |                   | 3           |              | 3            |              |
| 33                | Tuna, assorted, 175g per tins, 48 tins per box (afritada, menudo)   | 2                 | box             |                   | 1           |              | 1            |              |
| 34                | Vinegar, 1 gallon per container   | 2                 | container       |                   | 1           |              | 1            |              |
| <b>5020399000</b> | <b>OTHER SUPPLIES AND MATERIALS</b>   |                   |                 |                   |             |              |              |              |
| 35                | Isoprophyl Alcohol, 70 % solution, hypoallergenic, 500ml per bottle   | 100               | piece           | 20                | 20          | 20           | 20           | 20           |
| 36                | Cover all/Body Suit, autoclavable and washable suit; water proof fabric                                       | 50                | set             | 10                | 10          | 10           | 10           | 10           |
| 37                | Face shield, transparent, anti-fog/anti-moist, re-usable  | 69                | piece           | 23                |             | 23           |              | 23           |
| 38                | Head cover, garterized, 100 pieces per box  | 4                 | box             | 2                 |             | 2            |              |              |
| 39                | Disposable Baby Diaper, Medium, with cottony cover, elastic waistband, side leak guards, 54 pcs./pack         | 35                | pack            | 10                | 5           | 10           | 5            | 5            |





## *Section VI. Schedule of Requirements*

The delivery schedule expressed as weeks/months stipulates hereafter a delivery date which is the date of delivery to the project site.

| <b>Lot No.</b> | <b>Description</b>   | <b>Quantity</b> | <b>Place of Delivery</b>  | <b>Delivered, Weeks/Months</b>  |
|----------------|--|-----------------|---|---|
| <b>1</b>       | Food and Non-Food Supplies for RSCC                                      | 1 Lot           | Wangal, La Trinidad, Benguet and/or 16 Sgt. Floresca Street, Aurora Hill, Baguio City | <b>Please refer to the attached detailed list and delivery schedule of goods per center</b> |
| <b>2</b>       | Food and Non-Food Supplies for Regional Haven for Women and Girls (RHWG) | 1 Lot           | 40 North Drive, Baguio City   |   |
| <b>3</b>       | Food and Non-Food Supplies for RRCY                                      | 1 Lot           | Sitio Payda, Barangay Bayabas, Sablan, Benguet  |   |